

DESIGN
ERGO
ARCHITECTS



Execute **Color** Function Enhance
Improvise Elements
Technique **Space** Organize Achieve Shape
Inspire Innovate Structure **Form** Deliver Modern

About DesignErgo:

Design Ergo Architects is a team of young Architects & Engineers who believe in producing ergonomical spaces for better environment.

Design Ergo defines the difference between just utilizing a space & making the space functional to the optimum keeping in mind the essence & the business objective of the client.

We, at Design Ergo, provide world-class ambiance by constant innovation of methods & techniques. Here professionalism combines with technology & skilled manpower to deliver the best-equipped space for the future.

To achieve the above, we focus on the single aspect of the solution ensuring you a successful project in terms of its function, reliability & its flexibility to evolve easily in the face of changing requirements.

Research



Directors:

Mr. Asif Khan carrying over an experience of more than 8 lac sqft of projects. A thorough professional with an urge for designing, eye for detailing & the spirit of delivering.

Mrs Samina Shaikh an MBA in Marketing- having associated with various corporate organizations carrying an experience of over 10 years. A dedicated individual with excellence in identifying & winning new businesses.

Beliefs are like foundation of a building, the stronger they are, the longer they last.....

This is what the two young professionals believed & made the foundation of their knowledge stronger with hard work. Gathering experience was just like putting one brick on the other. They reinforced their passion till the sturdiest column of confidence was built.

These columns now hold the entire skyscraper of their dreams.



Work Process:

At Design Ergo, our goal is to give you a functional and attractive space. Our professional Interior Designer will see to it that your business environment is both employee and customer friendly.

We work with you to achieve the perfect balance of color, material and décor to express just the right mood for your space. Whether using paint or wall covering, we ensure that your office interior is designed with just the look you want.

We can evaluate a new or existing space and provide consultation on how to best utilize the space for your work environment or any other purpose. We'll walk you through every step of the process to ensure that your new space is planned and executed correctly.

We take into consideration traffic patterns, office environment, corporate culture, lighting, and communication needs when designing the office layout that will work best for your organization.



Companies:

Design Ergo Architects

A Proprietorship firm founded in the year 2005 primarily catering to corporate sector in terms of designing & consultancy.

Design Ergo Architects Pvt. Ltd.

One Step ahead to success, after a long experience Design Ergo Architects will soon be a Pvt. Ltd company

Directors:

Mr. Asif Khan (B Arch)

Mrs. Samin Shaikh (MBA Marketing)



Competencies:

We provide specialist advice & expert witness services in relation to design, construction and professional conduct. The fields of expertise in which we are available for specialist advice & services include:

- Architectural Services
- Interior Designing
- Turnkey Contracting
- Landscape Designing
- Liasioning
- Project Management



Aim:

We strive to deliver high quality projects with world class ambiance by constant innovation of methods & techniques. Budget is never seen as a constraint but as a challenge.

Core Values:

We pursue collaboration between experimental design & industry to discover and implement pragmatic, inspirational and logical applications that will benefit our clients through ergonomic & meticulous planning.

We recognize the importance of design, both, as a medium of communicating our clients' aspirations & also its contribution to the harmony and success of the built environment.

We deliver through an inclusive process of consultation & research, design solutions that are innovative, sustainable & are able to add value.

We believe that high quality design results from the continuity of the design process & intensive dialogue; dialogue with the client, consultants, contractors & end users.

We work closely together to ensure that the best results are achieved through a synthesis of concept, beauty & functional integration.



Beliefs:

Good design has a simplicity & clarity which often belies the intelligence of the solution. This same belief underpins our belief that good design creates value.

Fundamental to this is the belief that good design comes from the following:

- Understanding our Client's needs.
- Involving our Client in major decisions.
- Responding appropriately to a project's tangible & intangible context.
- Considering the project's long term viability & contribution to society.
- Respecting our limited natural resources.

Providing inspiring, innovative & sustainable solutions to complex challenges is what drives us each & everyday.



Clientele:

Some of the Clientele to mention

IT-ITES-BPO-KPO:

Andromeda Marketing Pvt. Ltd.
Adventity BPO (India) Pvt. Ltd.
Wipro 3D Networks.
Prosales Financial Services Pvt. Ltd.
Bankers Tool Box.

LOGISTICS:

Rivigo Services Pvt Ltd

BANKING SOLUTIONS:

Bankers Tool Box
JMR Infotech Pvt Ltd.
Vernost Marketing Pvt. Ltd.

BFSI:

Dhanlaxmi bank Ltd.
Reliance general Insurance Co. Ltd.
Prime Financial.
L&T Finance.

ACCOUNTING SOLUTIONS

J D Shah & Associates

TELECOMMUNICATION:

IMI Mobile Pvt. Ltd.

EVENT MANAGMENT

Light & Shades Event Management

ENGINEERING:

Rotork Controls India Pvt. Ltd.
IOT engineering projects ltd.
Skyway RMC plants pvt.ltd.
VCS Quality Services Pvt. Ltd.
Span Spectrum Pvt. Ltd.

ARCHITECTURAL

Indivisual Farm House

RETAILS:

Kryolan
Panache

MANUFACTURING:

hitachi
cmi - fpe
nt strips automation
Jabs International
Wam India Pvt. Ltd
Castaliaz Technologies Pvt. Ltd
Ram Fashion exports

HOSPATILITY:

Vikrant Recidancy (31 Keys Hotel)
Rajvanshi - Food Chain
Spice Fusion Fine Dine

AUTOMOBILE:

Tata Motors Ltd.

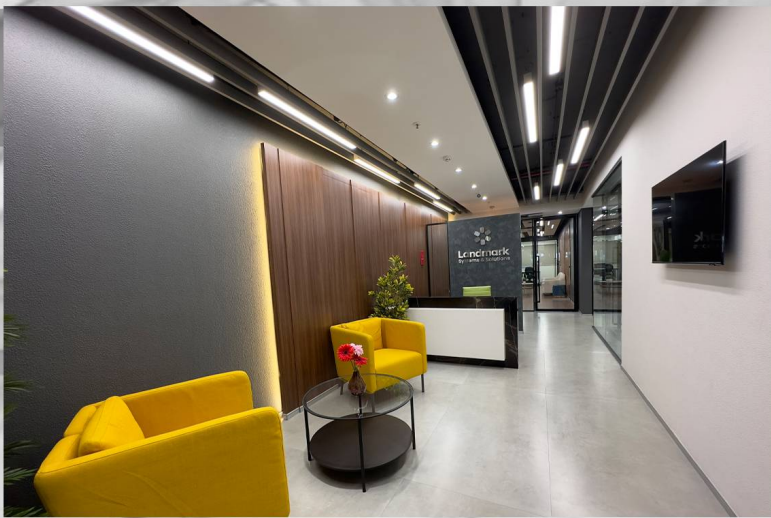


Landmark Systems & Solutions Kharghar.

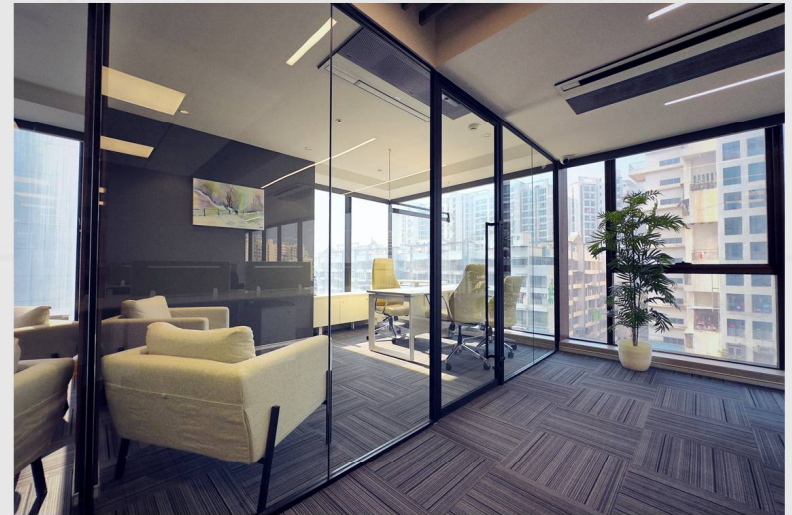


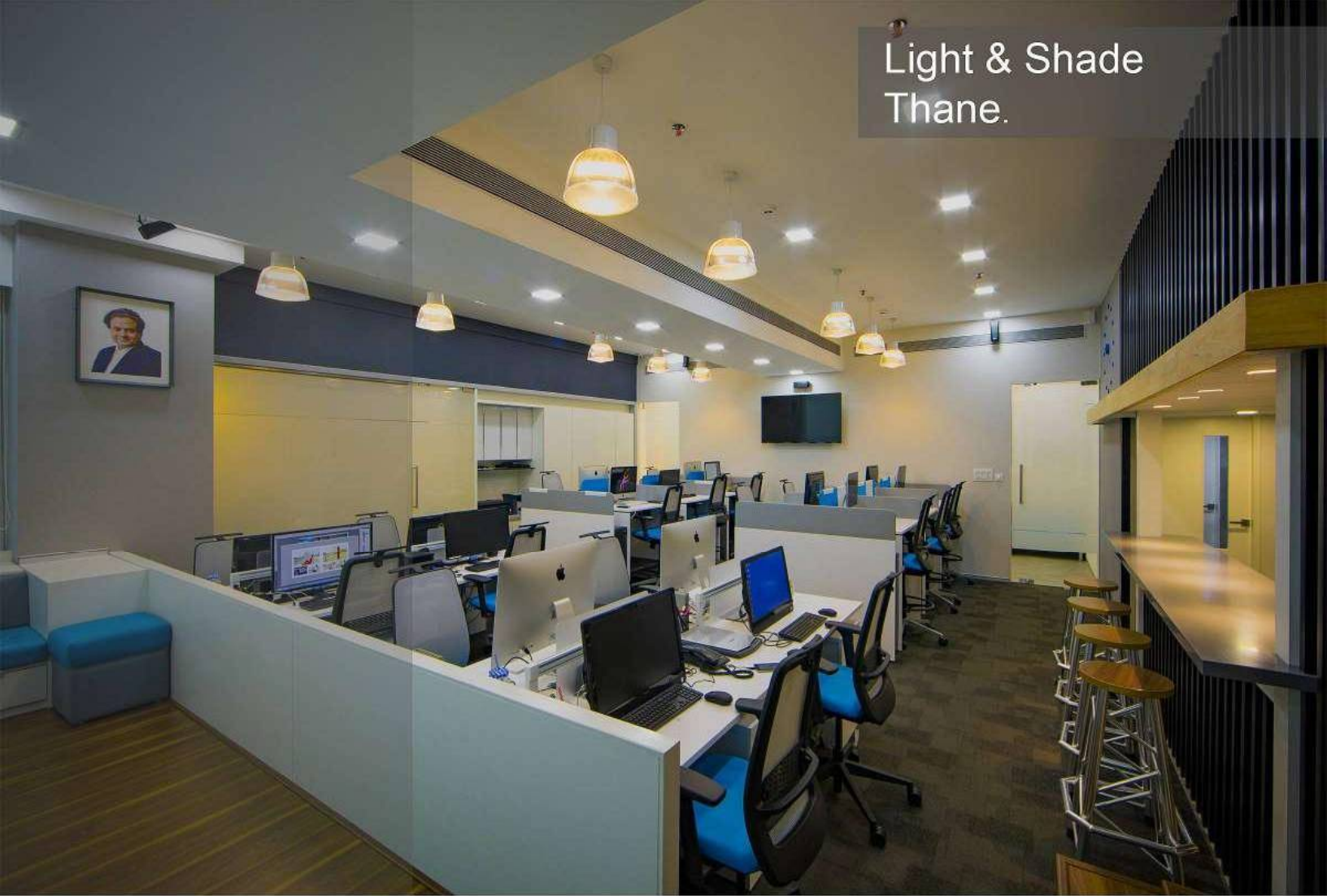
They are leveraging technology to disrupt the present ecosystem creating solutions for a better Customer-centric experience. They are also into providing 'Cloud empowered solutions' that can be easily deployed and scaled rapidly.

With more than 100+ clients, they have been serving the needs of the financial industry for more than a decade. Deliver solutions based on their own experience and customer feedback with a team of 80+ highly experienced software programmers.



LANDMARK SYSTEMS & SOLUTIONS
AREA 3800 SQFT





Light & Shade
Thane.

Light & Shade Events is 2 decades old venue construction company they began their journey with photography and today they have grown into biggest venue construction company catering to various event needs like: High quality Light and Sound, Truss, Barricading, Seating Gallery, Ac Hanger, Summer Shade Hanger, Various Seating arrangement, Photography, Videography etc.

They have excellently executed many Political Rallies & Sabhas of National leaders, State level Sports Events, Community Festivals, massive scale Entertainment event, Exhibitions, Art Festivals, etc. All this has been achieved by highly professional executive team with excellent capabilities to handle all kinds of events.



LIGHT AND SHADES
AREA 3500 SQFT





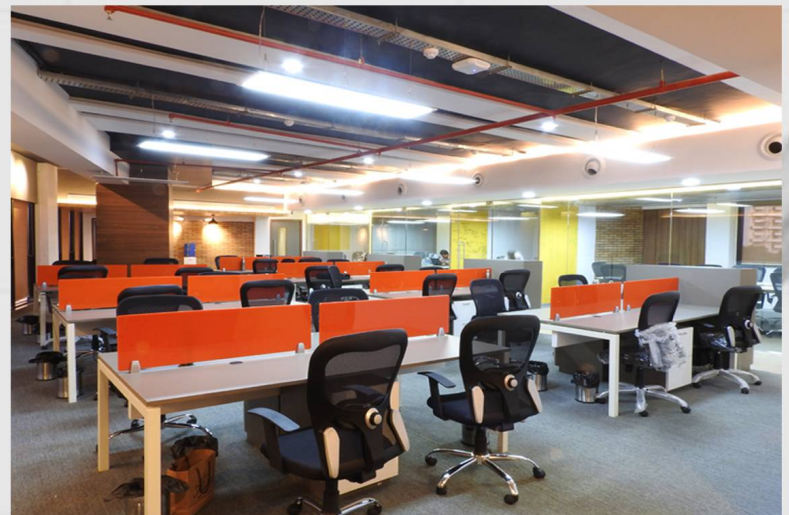
Revigo
Thane.

Revigo is a technology-enabled logistics company that aims to deliver reliability through their well-established network and provide transparency and par excellence service to their clients. Founded in 2014, they have been disrupting the sector with their unique operational model and cutting-edge technology to consistently provide unparalleled delivery times to their clients while improving the quality of life of their delivery people.

Rivigo Labs, their company's very own technology think-tank of the country's best data scientists and engineers has been put together to build process automation, analytics and data science. It re-envisioned the truck as an Internet of Things (IoT) platform with intelligent sensors that constantly interact with a real-time responsive logistics network.



REVIGO INDIA
AREA 3800 SQFT



UNIQUE DESIGNS
LIKE OUR CLIENTS BUSINESS



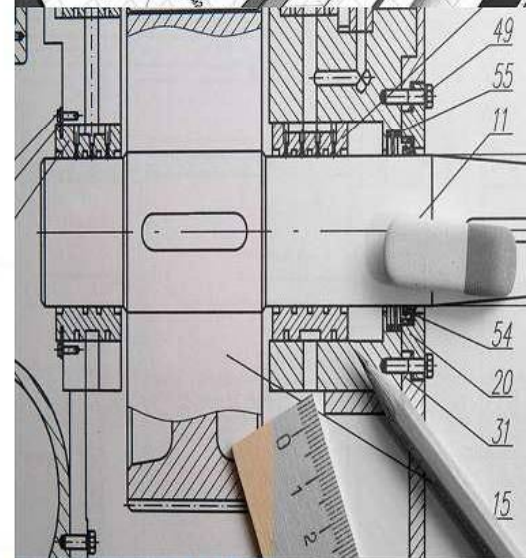
Imagination

We always believe its better to have 30 imaginations working on a project, rather than one imagination telling the other 29 what to do.



Idea

Great design begins with an idea that opens up exciting possibilities and pushes boundaries.....inspiring living and working.



Detailing

The level of detail & craft is something that's inscribed within the original design concept and so when we begin to design, we know what kind of detailing we want the designs to have.



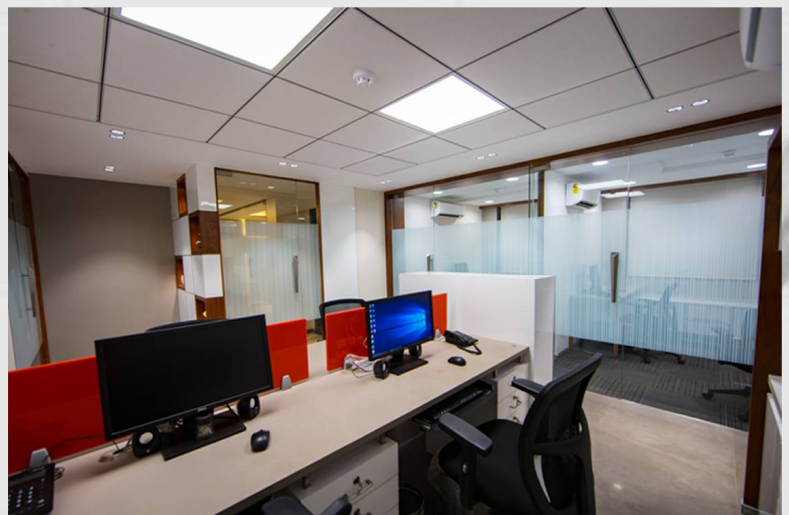
A photograph of a modern office interior. In the foreground, a set of grey granite stairs leads up to a glass-walled meeting room. The meeting room is elevated on a wooden platform and contains three black office chairs around a table. The walls are a mix of wood paneling and brick. In the background, another glass-walled office space is visible, featuring a white reception desk and more office furniture. The ceiling has exposed wooden beams and recessed lighting.

ADITYA OBERON INFRA Thane.

Aditya Oberon Infrastructure Llp founded in the year 2013, are into construction with multiple land use in thane. They have sucessfully handed over 20 projects in all the sector like comercial building, Residential housing, IT buildings etc.



ADITYA OBERON INFRA
AREA 4000 SQFT



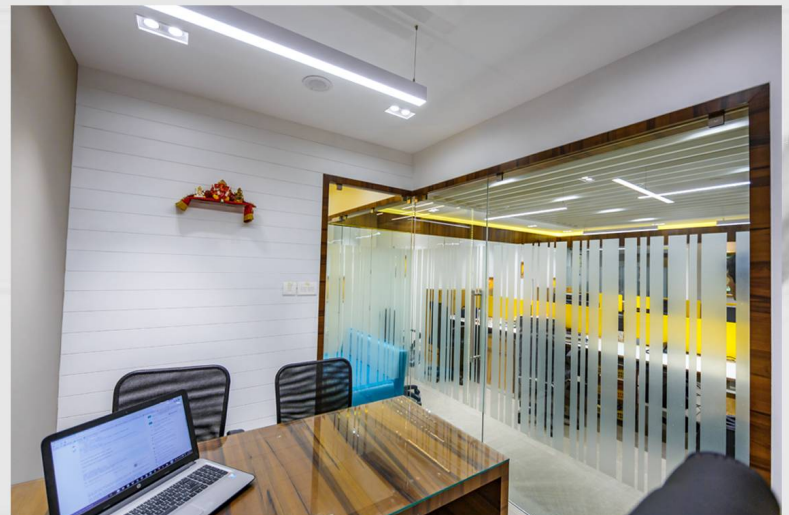
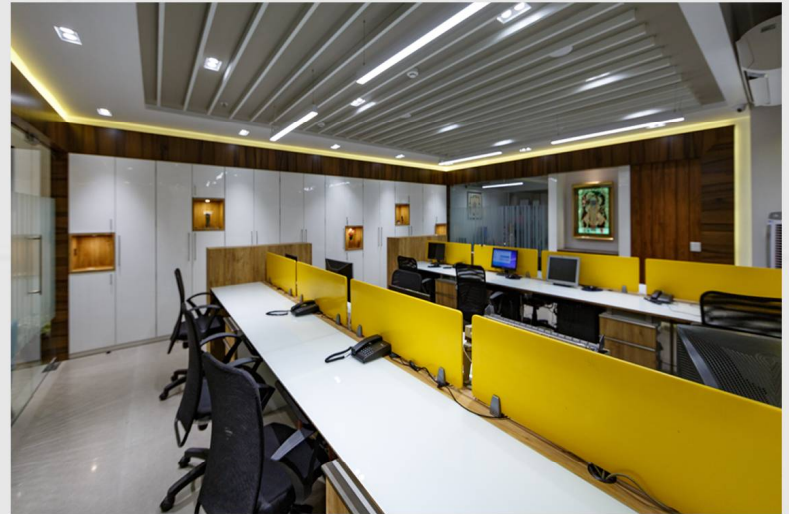
J D Shah & Associates
Thane.



J D Shah & Associates are a well known chartered accountant and portfolio management in thane.



J D SHAH & ASSOCIATES
AREA 2500 SQFT



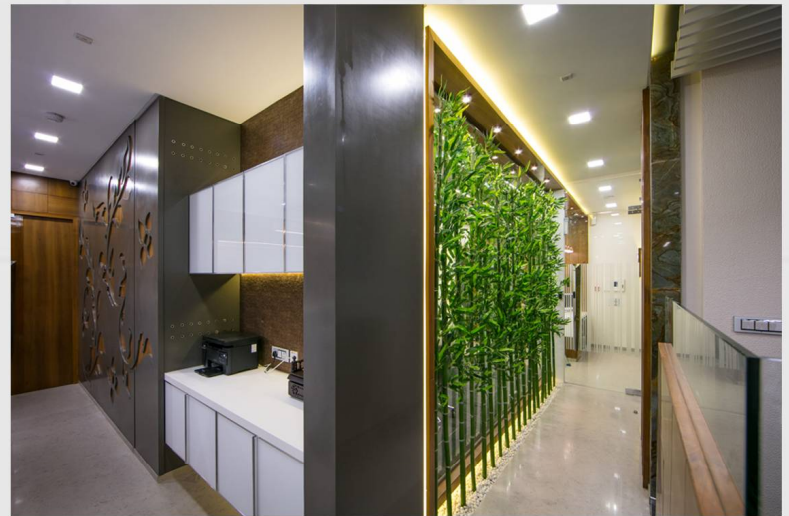
Soan Spectrum Pvt. Ltd. Mumbai



Span spectrum private limited is a private company incorporated on 14 march 2012. it is classified as indian non-government company, mostly the are in to consultancy and backend support for the companies like Blue-star, Cadbury, cocacola and may more big giants in the industry.



SPAN SPECTRUM
AREA 1200 SQFT



L & T Finance Pan India



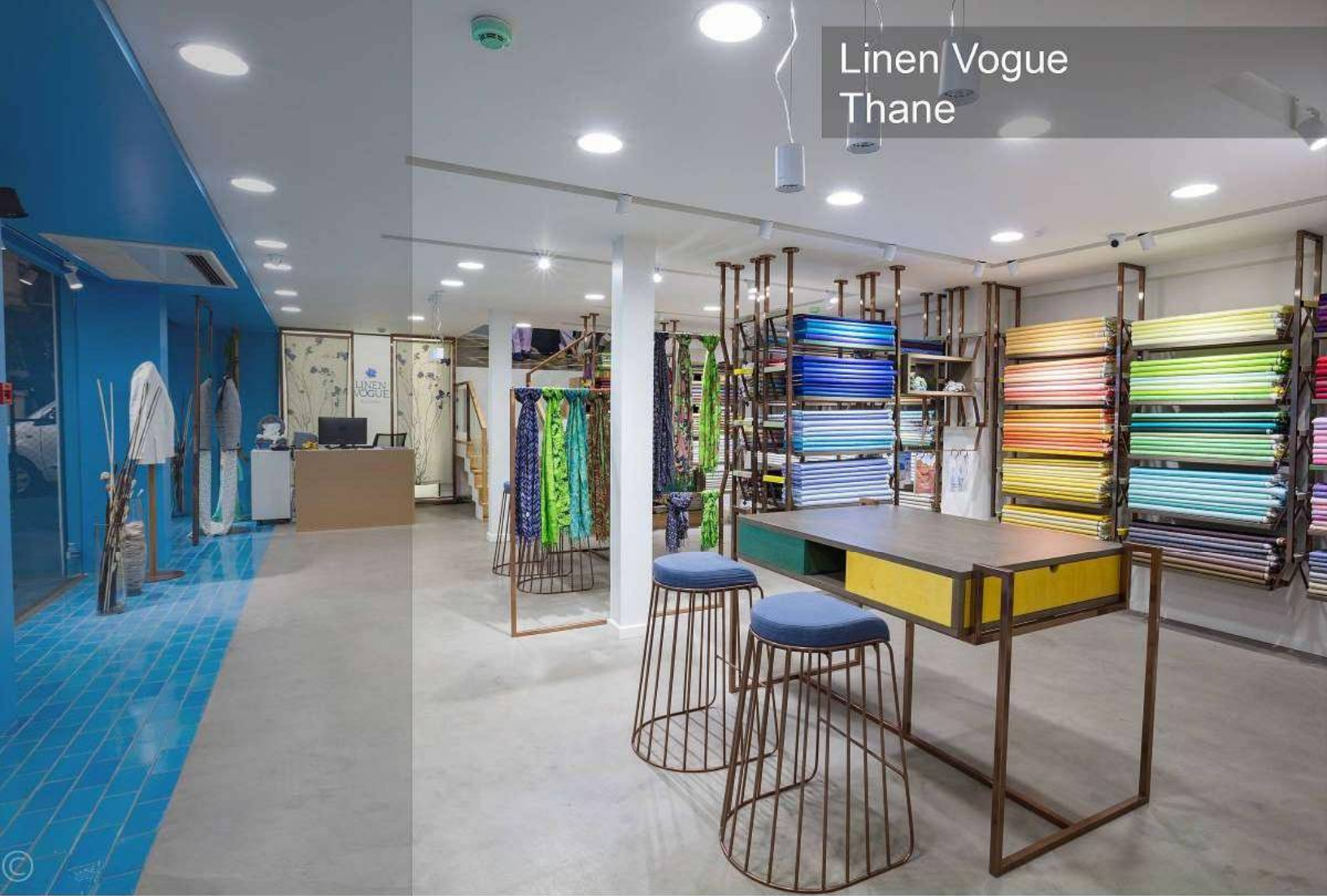
L&T Finance Ltd. and L&T Fincorp Ltd. have been merged into Family Credit Ltd, effective from February 13, 2017. Subsequently the name of Family Credit Ltd. is changed to L&T Finance Ltd.



L & T FINANCE
TOTAL AREA 12500 SQFT



Linen Vogue Thane



LinenVogue fabrics drench you in the pure love of true linen. They craft a pallet of fabrics where the real texture of linen speaks out loud. Every meter of LinenVogue fabrics are weaved and designed with an obsessive observation to details and passionate attention to quality.



© Yog 9967865566



LINEN VOUGE
AREA 3800 SQFT



© Yog 9967865566



© Yog 9967865566



© Yog 9967865566

Dhanlaxmi Bank Ltd.
Mumbai.

DhanlaxmiBank
established 1927



Dhanlaxmi Bank Ltd. was incorporated in 1927 at Thrissur, Kerala by a group of ambitious and enterprising entrepreneurs. Over the 84 years that followed, Dhanlaxmi Bank with its rich heritage has earned the trust and goodwill of clients. It is due to company's strong belief in the need to seek innovation, deliver best service and demonstrate responsibility that they have grown from strength to strength. Be it in the number of customers, the scale of business, the breadth of their product offerings, the banking experience they offer or the trust that people invest in them.



DHANLAXMI BANK
AREA 4500 SQFT.



Prosales Financial
Services Pvt. Ltd
Mumbai.



prosales financial services pvt. ltd stands as an epitome for dedication, expertise and the drive to provide the customers the service for which they excel over the rest. prosales is an organization where the difficult is made easy. Providing the best loans by tailoring them to our customer's needs, prosales has risen to being the most preferred loan consultancy in the country. Today, prosales operates out of 8 major cities in the country and in its two decades of operations has disbursed loans worth over Rs.5, 000 crore to more than 1,00,000 happy customers. It is the biggest financial distributor in India having partnered with some of the biggest financial institutions in the country.

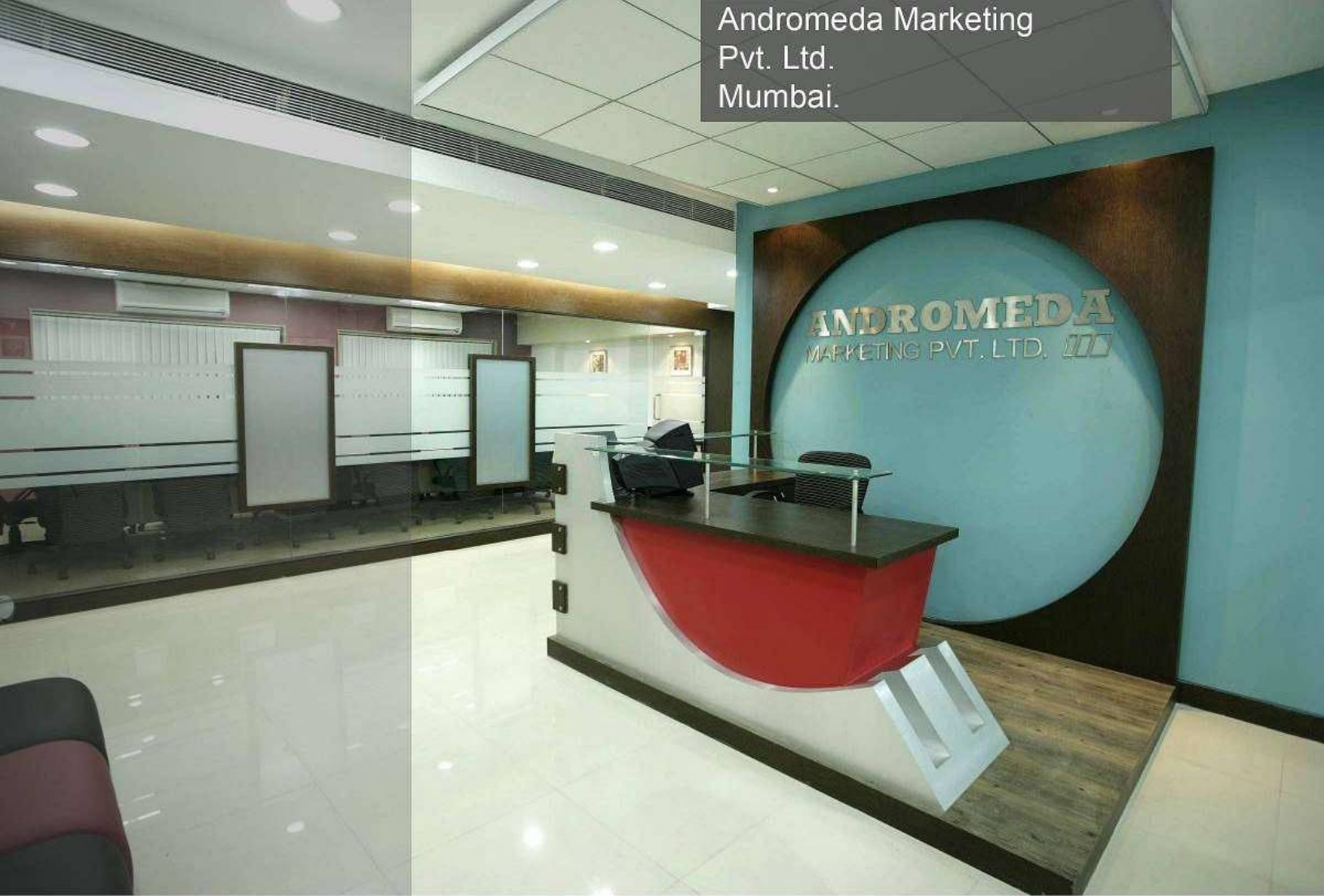


PROSALES FINANCIAL SERVICES PVT.LTD

AREA 16000 SQFT.



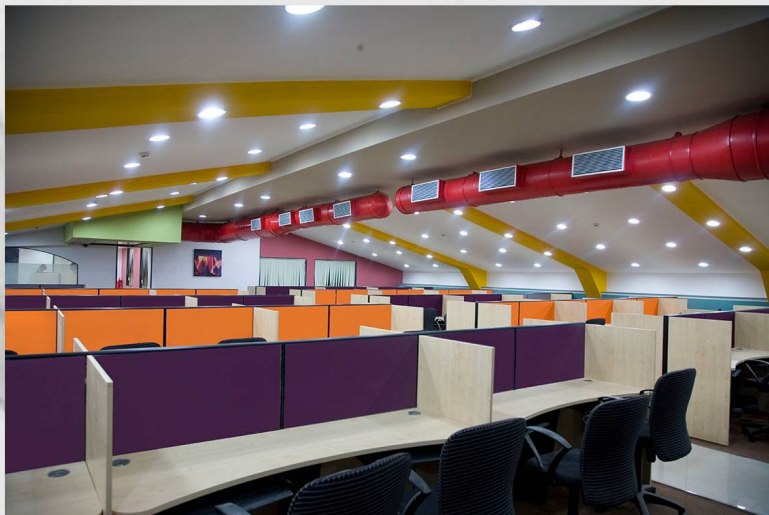
Andromeda Marketing
Pvt. Ltd.
Mumbai.

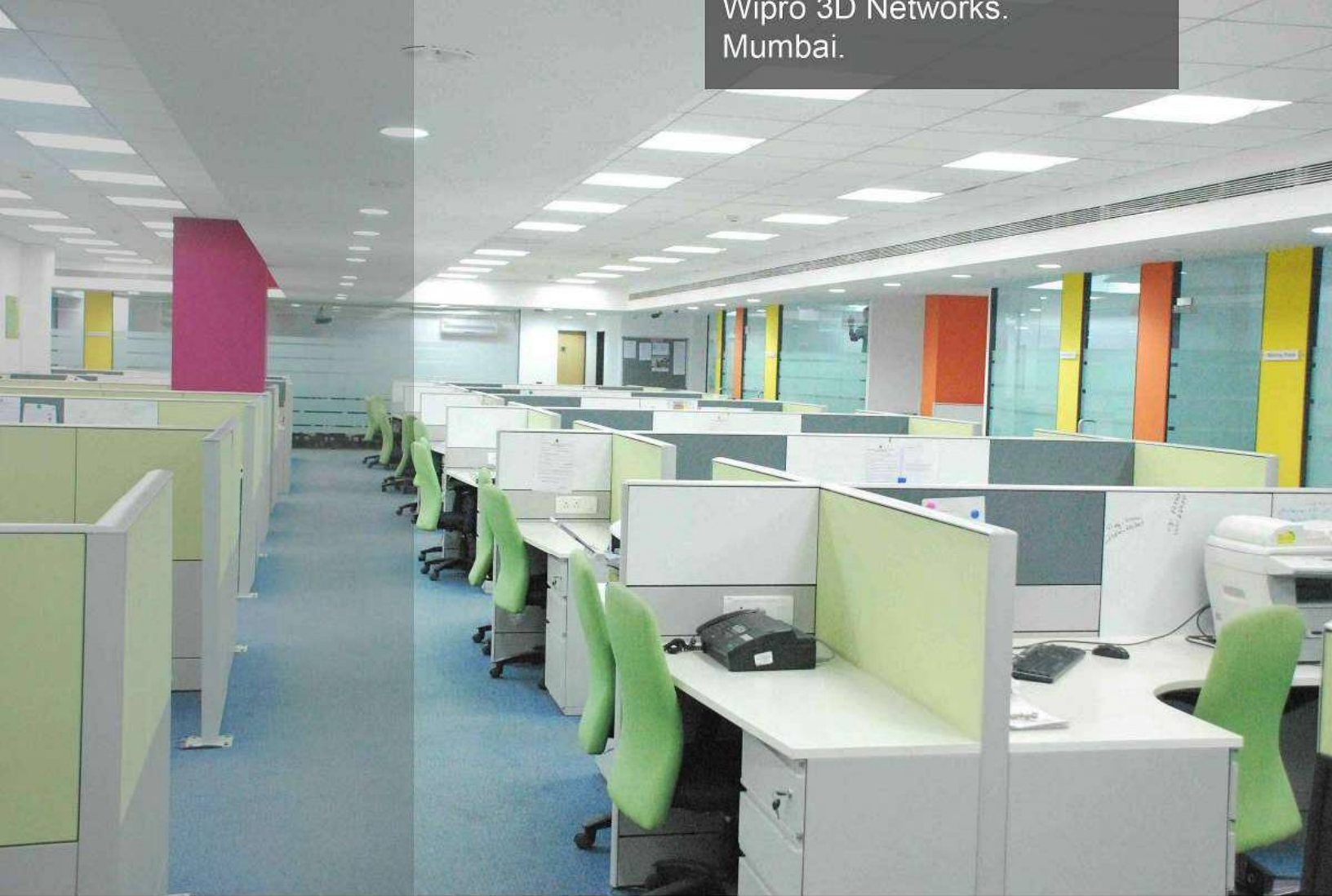


Andromeda stands as an epitome for dedication, expertise and the drive to provide the customers the service for which they excel over the rest. Andromeda is an organization where the difficult is made easy. Providing the best loans by tailoring them to our customer's needs, Andromeda has risen to being the most preferred loan consultancy in the country. Today, Andromeda operates out of 8 major cities in the country and in its two decades of operations has disbursed loans worth over Rs.5, 000 crore to more than 1,00,000 happy customers. It is the biggest financial distributor in India having partnered with some of the biggest financial institutions in the country.



ANDROMEDIA MARKETING PVT.LTD
TOTAL AREA 69000 SQFT.





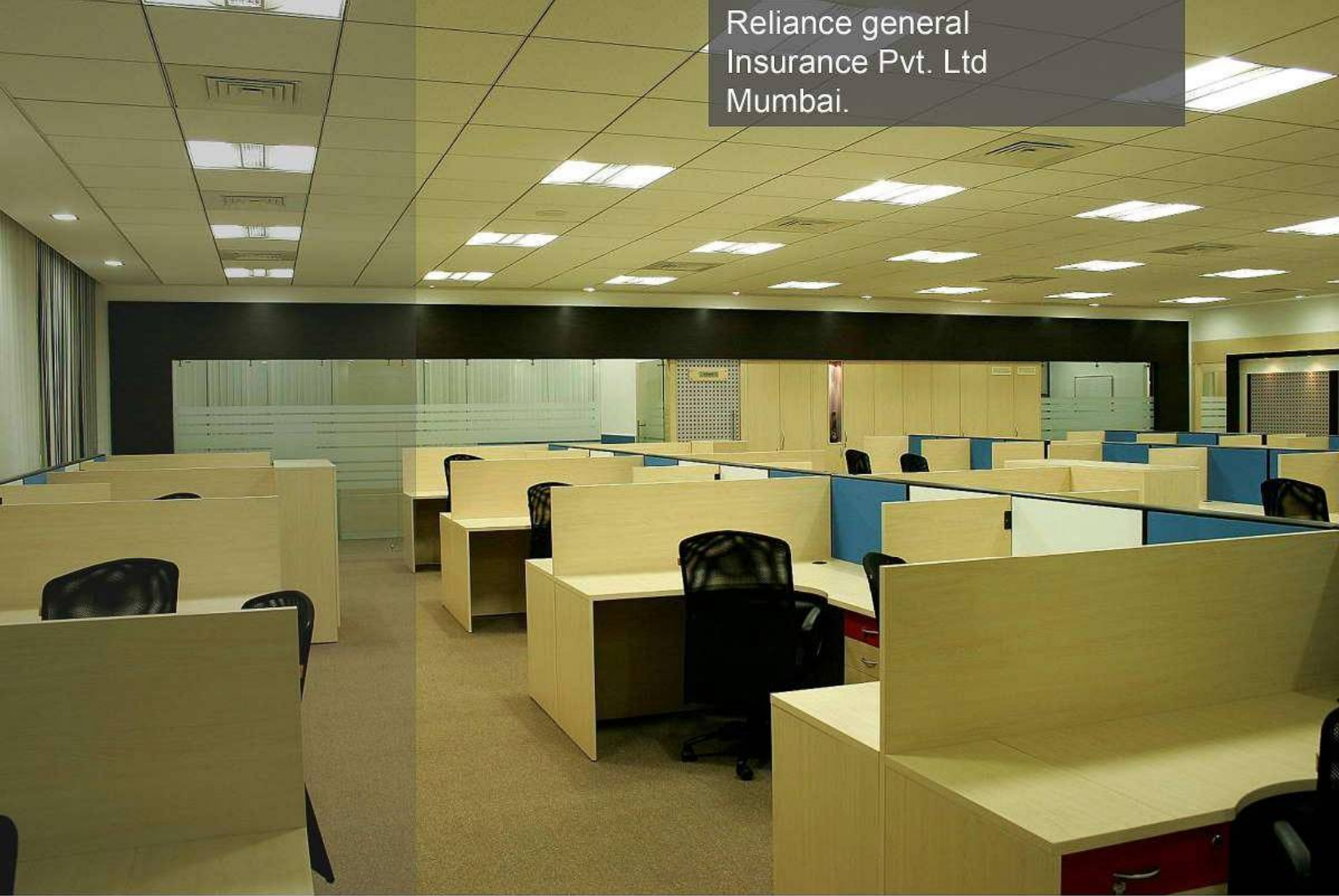
Wipro 3D Networks, a platinum partner of Nortel Networks, providing business communication solutions that include Consulting, Voice, Data and Converged Solutions, and Managed Services. The company's specialized solutions are deployed in ITES/IT, Telecom, Banking and Finance, Government and Service verticals. In India, 3D Networks have a dominant presence in providing business communication solutions to ITES/IT segments and has approximately 270 employees serving several marquee customers.



WIPRO 3D NETWORKS
AREA 8000 SQFT.



Reliance general
Insurance Pvt. Ltd
Mumbai.

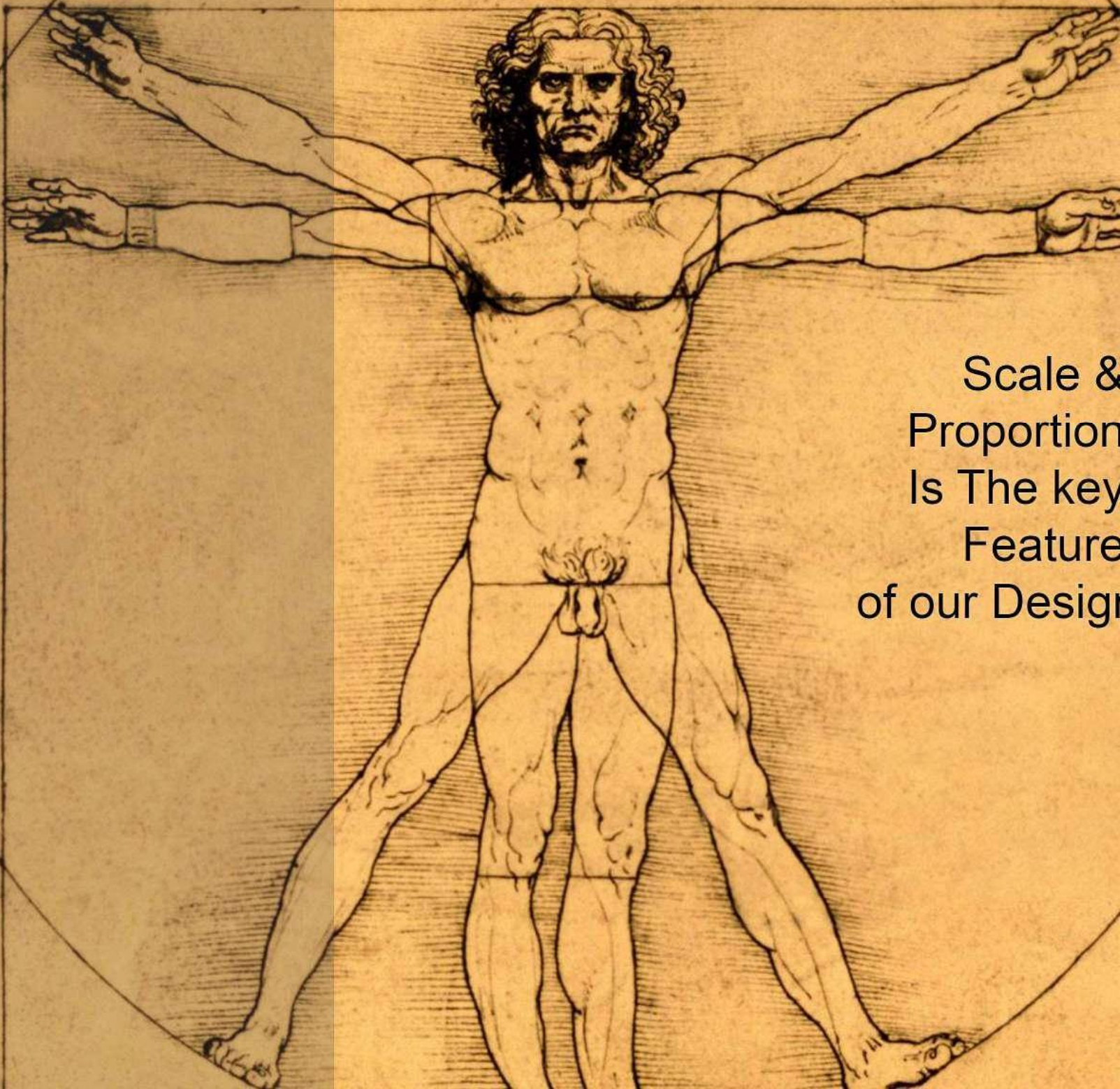


Reliance General Insurance is one of India's leading private general insurance companies with over 94 customized insurance products catering to the corporate, SME and individual customers. Reliance General Insurance has an extended network of over 200 offices spread across 173 cities in 22 states. It is also India's first insurance company to be awarded the ISO 9001:2000 certification across all functions, processes, and products and locations pan-India.



RELIANCE GENERAL INSURANCE
TOTAL AREA 43000 SQFT.





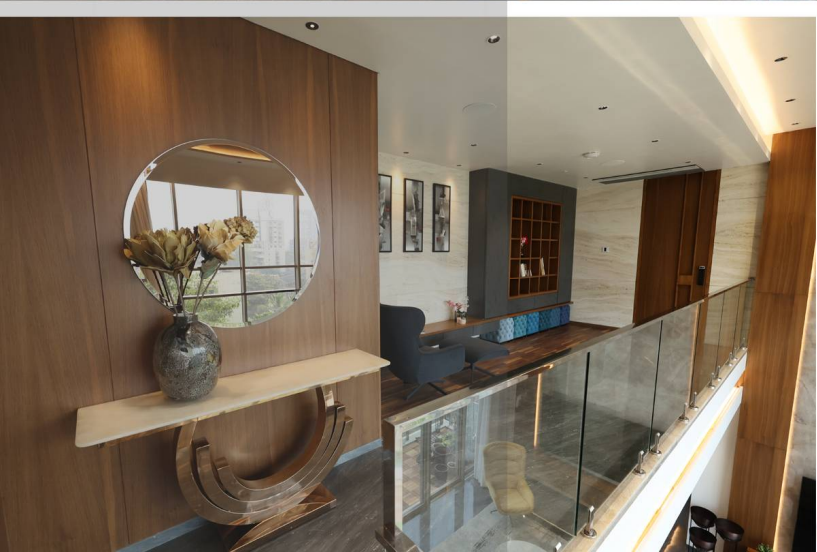
Scale &
Proportion
Is The key
Feature
of our Design

QUALITY

MANAGEMENT

PERFORMANCE

Mr. Sachin Shinde
W-54 Matunga.





Mr. Sachin Shinde
W - 54 Wadhawa - Matunga
AREA 2800 SQFT
5 BHK



Mr. Vinayak Mamankar
Neelkanth Thane.



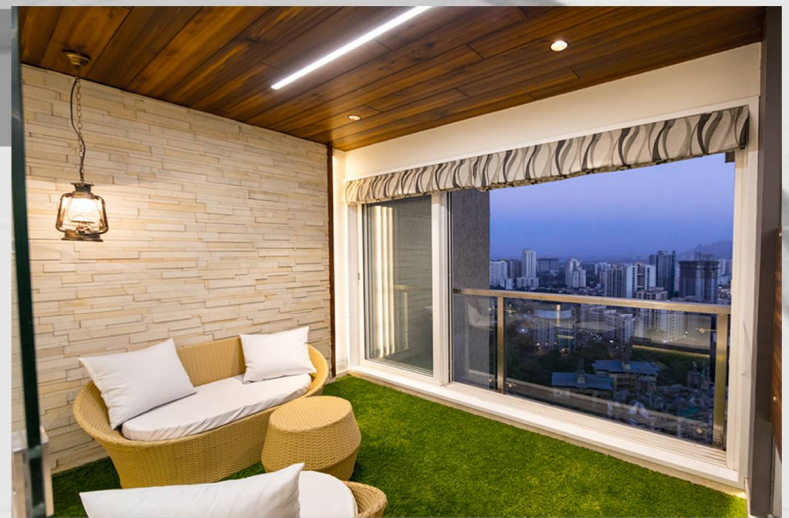


Mr. Vinayak Mamankar
NeelkaNT Heights - Thane
AREA 1850 SQFT
4 BHK



Mr. Bhoir Residence
Thane

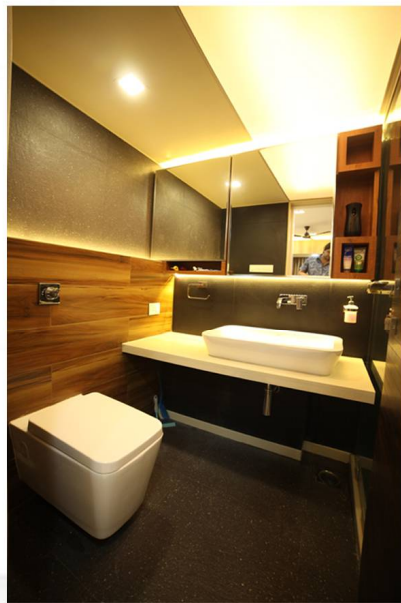


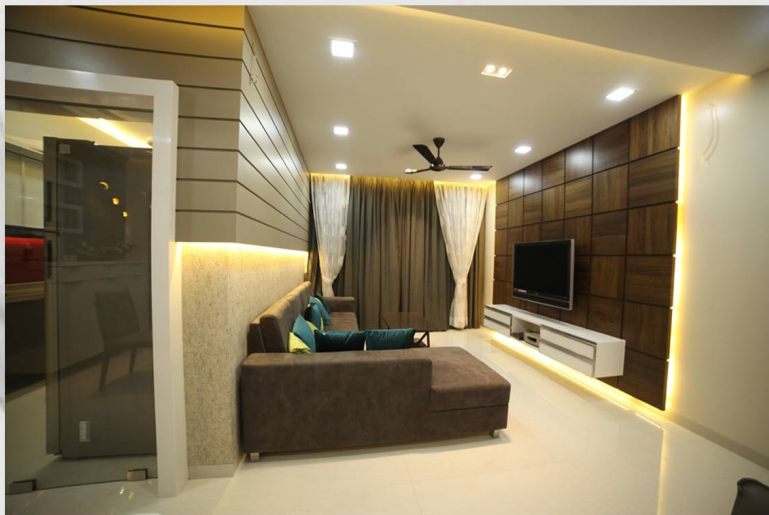


MR BHOIR RESIDENCE



Mr. Vinod Seth Residence
Matunga - Mumbai





Mr. Soni's Residence
Matunga





MR SONI'S RESIDENCE

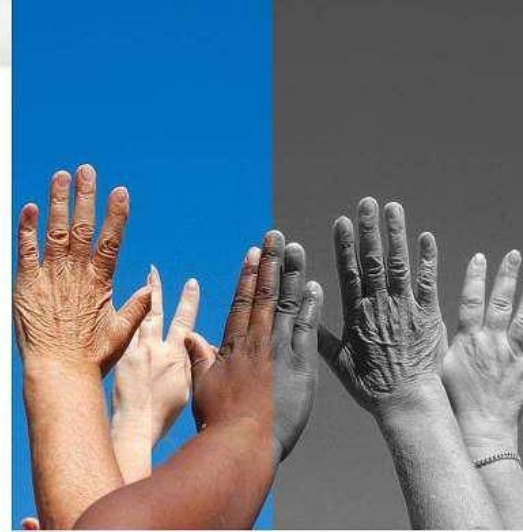




REACH YOU
WHEREVER WE ARE

Aspiration

We work in partnership with our clients.....
Communicating their vision, reflecting
their brand and delivering their aspira-
tions.



Strategy

Though we can't read minds, but we do
have the ability to implement actionable
insights to get an inside view of the clients'
business & help them put together effec-
tive strategies to achieve the desired solu-
tion.



Simplicity

Everything should be made as simple as
possible, but not simpler.



Mr. Barai's Residence
Thane





MR BARAI'S RESIDENCE



ALWAYS READY WITH
AN ALTERNATIVE

~~PLAN A~~
PLAN B





Even the best
TEAM
needs a
playground to
WIN

GEOGRAPHICAL POINT

19°11'29.80"N 72°57'17.29"E

HO:
Block #B 27,
Highway Darshan,
Teen Hath Naka,
Thane West - 400607.

Regd
A-603, Kanakia,
Neharika Bldg,
Near Hiranandani Medows,
Thane - west- 400610.

DESIGNED BY: DESIGN ERGO